



# CerebBand

## Realize continuous EEG

An intuitive way of EEG electrode setup –  
Even without experience



In every Intensive Care Unit (ICU) between 10-20% of patients are unconscious. The vital signs of heart and respiration are normal, so why does the patient not wake up?

One cause of unconsciousness could be the development of non-convulsive status epilepticus (NCSE). NCSE can cause secondary brain damage, leading to higher morbidity and mortality rates.

Continuous EEG (cEEG) in ICU can support the detection of NCSE, potentially leading to prompt treatment and improved prognosis.

Only 3 steps to measure

Put the  
CerebBand  
on the  
patient's  
head

Insert the  
innovative  
CerebTrodes  
under the  
headband

Attach lead  
cables and  
connect them  
to the patient  
monitor or  
EEG machine

# An intuitive way of EEG electrode setup

## Apply the CerebBand to the patient's head

The headband indicates electrode positions.

## Complete head coverage with 9 electrodes

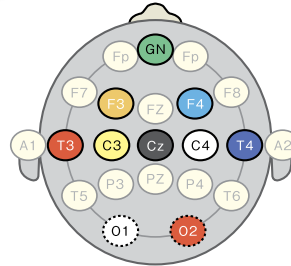
CerebBand includes frontal, central, temporal and occipital electrodes for an excellent head coverage.

## Easy connection

Color-coded lead cables and electrodes make connections quick and easy.

## Good EEG signal quality

The innovative gel CerebTrodes guarantee an optimal EEG signal quality, even if you apply the electrodes on hair.



Position	Color
F3	Orange
F4	Light blue
C3	Yellow
C4	White
T3	Red
T4	Blue
O1	Beige (white stitches)
O2	Beige (red stitches)
Cz	Black
Z	Green

Description	CerebBand small (48-54cm) head circumference	CerebBand medium (54-60cm) head circumference	CerebTrode (gel) and ground electrode	Connection cables for patient monitor	Neurofax CerebBand single plug cord for JE-921A
Supply code	H564B	H564C	E/CerebTrode-6Pat	K621B	K640A
Quantity	1	1	Complete set for 6 measurements	10 connection cables (colored)	One plug/ 10 cables (colored)



E/CerebTrode-6Pat

## Neurofax, Life Scope G9 and EEG unit Related Nihon Kohden NeuroMonitoring products

### Neurofax



### Life Scope G9



### EEG input unit



CerebBand is compatible with every EEG equipment supporting DIN touch proof connectors but specifically with Nihon Kohden Neurofax (EEG-1200) and Life Scope patient monitors (Life Scope VS, Life Scope TR and Life Scope G9) including the EEG unit.



NIHON KOHDEN EUROPE GmbH  
Raiffeisenstr. 10, 61191 Rosbach, Germany  
Phone: +49 6003 827 0, Fax: +49 6003 827 599  
Internet: www.nihonkohden.com, E-mail: info@nke.de



NIHON KOHDEN CORPORATION  
1-31-4 Nishiochiai, Shinjuku-ku, Tokyo 161-8560, Japan  
Phone: +81 (3) 59 96-80 36, Fax: +81 (3) 59 96-81 00  
Internet: www.nihonkohden.com